



Environmental Information for Customers in the European

Union European Directive 2002/96/EC requires that the equipment bearing this symbol on the product and/or its packaging must not be disposed of with unsorted municipal waste. The symbol indicates that this product should be disposed of separately from regular household waste streams. It is your responsibility to dispose of this and other electric and electronic equipment via designated collection facilities appointed by the government or local authorities. Correct disposal and recycling will help prevent potential negative consequences to the environment and human health.

For more detailed information about the disposal of your old equipment, please contact your local authorities, waste disposal service, or the shop where you purchased the product.

Sales & Technical Helplines

Our Sales & Technical helplines are open
Monday to Friday from 8.00am to 5.00pm

SALES



++44 (0)1604 589414 (and press option 1)



info@ultrasecuredirect.com

TECHNICAL



++44 (0)1604 589414 (and press option 2)



technical@ultrasecuredirect.com

ULTRA SECURE LTD,

9-10 RYEHILL COURT,

LODGE FARM I/E, NORTHAMPTON, NN5 7EU

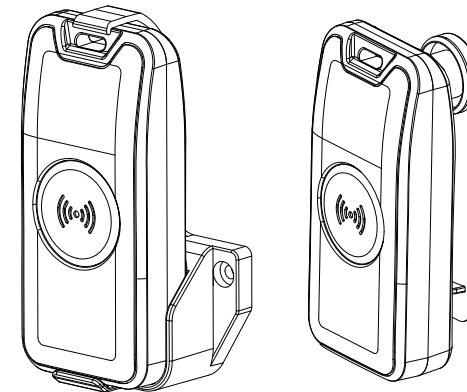
UNITED KINGDOM

www.ultrasecuredirect.com

UltraSecure

PROTECT 800

P800-MT/2

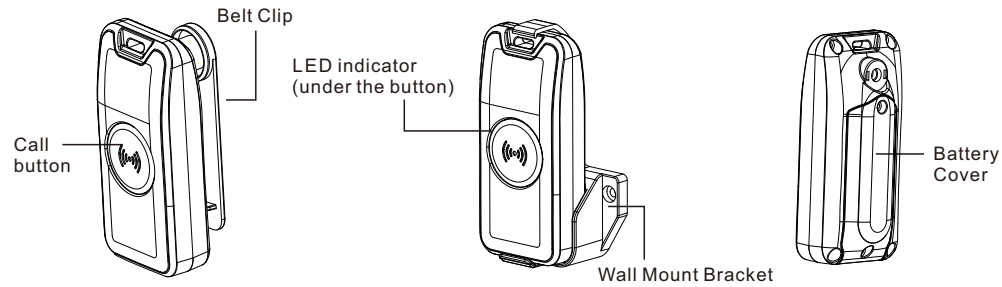


User Manual

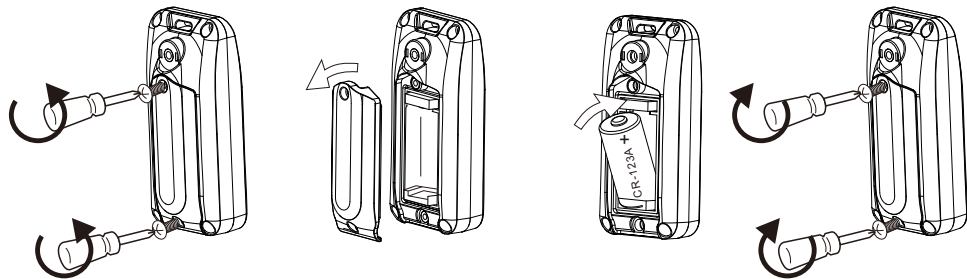
USER MANUAL

P800-MT/2

Parts & Function



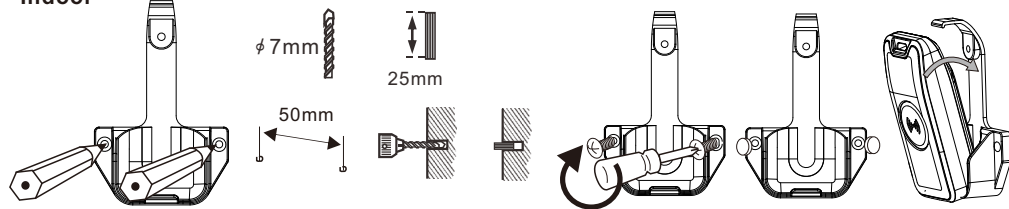
Power Installation



Remove the screws to open the battery cover

Insert a CR123A battery and replace the battery cover

Mounting on the wall Indoor



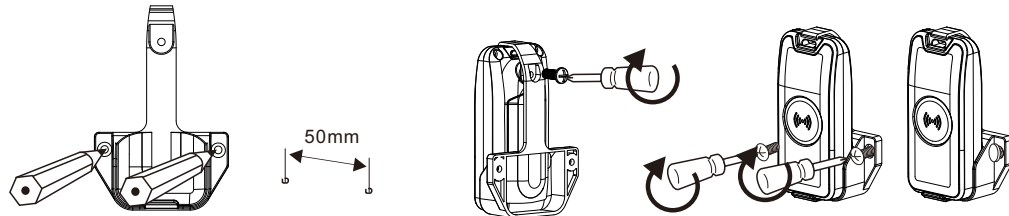
Marking the holes using a pencil.

Drilling holes using an electric drill.

Mount the bracket using screwdriver. Put the rubber pads to cover the screw.

Outdoor

If the transmitter is installed outdoors, to prevent it from being easily stolen, you can install it as follows

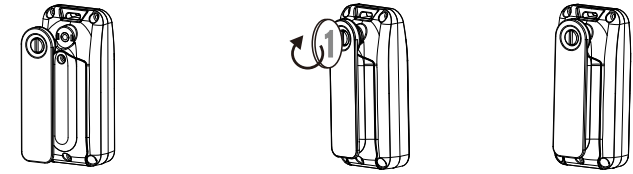


Marking the holes using a pencil. Drilling holes using an electric drill as above

Attach the transmitter to the bracket together with screw provided.

Mount the transmitter and bracket using screwdriver. Put the rubber pads cover the screw.

Install the belt clip



Place the belt clip on the back side of the transmitter

Tie the screw with a coin

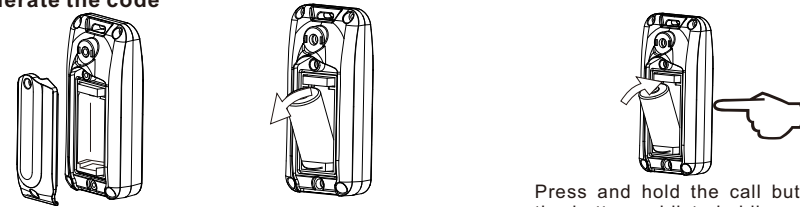
Pairing

Need to pair the transmitter & receiver before use, The pairing step please refer to the user manual of receiver

Code Conflict

If the transmitter coding is the same as another transmitter you must change the code. When you have changed the code re-pair the transmitter

Regenerate the code



Open the battery cover

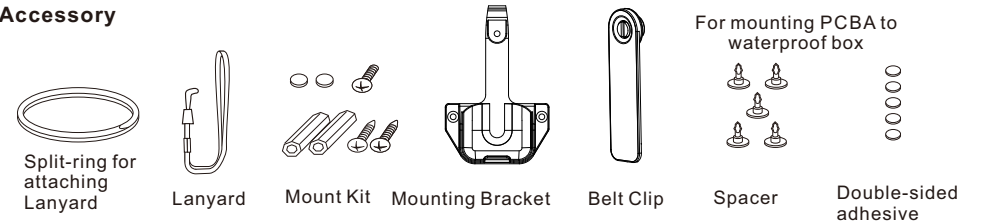
remove the CR-123A battery

Press and hold the call button, insert the battery whilst holding the button for 5 seconds. The LED will flash 5 times when a new code is generated

Battery Low

When the battery is battery low, The LED will blink 5 times after operation and It will send the battery low information to the receiver together with trigger signal. The battery low information also show on the receiver.

Accessory



FCC Statement:

This equipment has been tested and found to comply with the limits for a Class B digital device, pursuant to part 15 of the FCC Rules. These limits are designed to provide reasonable protection against harmful interference in a residential installation. This equipment generates, uses and can radiate radio frequency energy and, if not installed and used in accordance with the instructions, may cause harmful interference to radio communications. However, there is no guarantee that interference will not occur in a particular installation. If this equipment does cause harmful interference to radio or television reception, which can be determined by turning the equipment off and on, the user is encouraged to try to correct the interference by one or more of the following measures:

- * Reorient or relocate the receiving antenna.
- * Increase the separation between the equipment and receiver.
- * Connect the equipment to an outlet on a circuit different from that to which the receiver is connected.

This device complies with part 15 of the FCC rules. Operation is subject to the following two conditions: (1) This device may not cause harmful interference, and (2) this device must accept any interference received, including interference that may cause undesired operation.

Note: Modifications to this product will void the user's authority to operate this equipment.

